

# Top & Trending Research in BioOne Complete

JAN-APR 2020

**ATLAS OF BRAZILIAN SNAKES: VERIFIED POINT-LOCALITY MAPS TO MITIGATE THE WALLACEAN SHORTFALL IN A MEGADIVERSE SNAKE FAUNA**

*SOUTH AMERICAN JOURNAL OF HERPETOLOGY*

[doi.org/10.2994/SAJH-D-19-00120.1](https://doi.org/10.2994/SAJH-D-19-00120.1)

**SEED-COAT COLOR AFFECTS OVIPOSITION IN THE BEAN BEETLE, *CALLOSOPRUCHUS MACULATUS* (COLEOPTERA: CHRYSOMELIDAE)**

*ANNALES ZOOLOGICI FENNICI*

[doi.org/10.5735/086.056.0116](https://doi.org/10.5735/086.056.0116)

**EFFECTS OF ROADS AND MOTORIZED HUMAN ACCESS ON GRIZZLY BEAR POPULATIONS IN BRITISH COLUMBIA AND ALBERTA, CANADA**

*URSUS*

[doi.org/10.2192/URSUS-D-18-00016.2](https://doi.org/10.2192/URSUS-D-18-00016.2)

**REVIEW OF CANINE DISTEMPER VACCINATION USE AND SAFETY IN NORTH AMERICAN CAPTIVE LARGE FELIDS (*PANTHERA* SPP.) FROM 2000 TO 2017**

*JOURNAL OF ZOO AND WILDLIFE MEDICINE*

[doi.org/10.1638/2018-0163](https://doi.org/10.1638/2018-0163)

**DISCOSCAPIDAE FAM. NOV. (HYMENOPTERA: APOIDEA), A NEW FAMILY OF STEM LINEAGE BEES WITH ASSOCIATED BEETLE TRIUNGULINS IN MID-CRETACEOUS BURMESE AMBER**

*PALAEODIVERSITY*

[doi.org/10.18476/pale.v13.a1](https://doi.org/10.18476/pale.v13.a1)

**FOREST AND LAND FIRES, TOXIC HAZE AND LOCAL POLITICS IN INDONESIA**

*INTERNATIONAL FORESTRY REVIEW*

[doi.org/10.1505/146554819827906799](https://doi.org/10.1505/146554819827906799)

**RELEASE RATES AND COMPLICATIONS FOR BIRDS OF PREY WITH ANTEBRACHIAL FRACTURES AT A VETERINARY TEACHING HOSPITAL**

*JOURNAL OF AVIAN MEDICINE AND SURGERY*

[doi.org/10.1647/2018-394](https://doi.org/10.1647/2018-394)

**THE ROAD NOT TAKEN: HOST INFECTION STATUS INFLUENCES PARASITE HOST-CHOICE**

*JOURNAL OF PARASITOLOGY*

[doi.org/10.1645/19-140](https://doi.org/10.1645/19-140)

**FACTORS AFFECTING ABNORMAL MOLTING IN THE MANAGED AFRICAN PENGUIN (*SPHENISCUS DEMERSUS*) POPULATION IN NORTH AMERICA**

*JOURNAL OF ZOO AND WILDLIFE MEDICINE*

[doi.org/10.1638/2019-0080](https://doi.org/10.1638/2019-0080)

**EXPERIMENTAL CULTIVATION OF EASTERN NORTH AMERICA'S LOST CROPS: INSIGHTS INTO AGRICULTURAL PRACTICE AND YIELD POTENTIAL**

*JOURNAL OF ETHNOBIOLOGY*

[doi.org/10.2993/0278-0771-39.4.549](https://doi.org/10.2993/0278-0771-39.4.549)

**SHORT-TERM STREAM AND RIPARIAN RESPONSES TO BEAVER DAM ANALOGS ON A LOW-GRADIENT CHANNEL LACKING WOODY RIPARIAN VEGETATION**

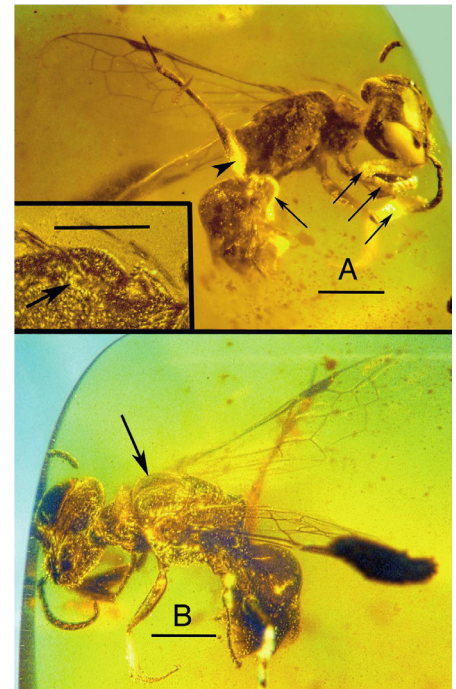
*NORTHWEST SCIENCE*

[doi.org/10.3955/046.093.0302](https://doi.org/10.3955/046.093.0302)

**CARNIVORE CARRYING BEHAVIOR AS DOCUMENTED WITH WILDLIFE CAMERA TRAPS**

*WESTERN NORTH AMERICAN NATURALIST*

[doi.org/10.3398/064.079.0401](https://doi.org/10.3398/064.079.0401)



*Discoscapiidae gen. et sp. nov. in Burmese amber, Palaeodiversity* [doi.org/10.18476/pale.v13.a1](https://doi.org/10.18476/pale.v13.a1)

**AGEING NORTHERN SAW-WHET OWLS (*AEGOLIUS ACADICUS*) FROM REMIGIAL MOLT PATTERNS**

*JOURNAL OF RAPTOR RESEARCH*

[doi.org/10.3356/0892-1016-53.4.387](https://doi.org/10.3356/0892-1016-53.4.387)

**ANNUAL UNDERSTORY PLANT RECOVERY DYNAMICS IN A TEMPERATE WOODLAND MOSAIC DURING A DECADE OF ECOLOGICAL RESTORATION**

*NATURAL AREAS JOURNAL*

[doi.org/10.3375/043.040.0104](https://doi.org/10.3375/043.040.0104)

*BioOne Complete is a full-text database of over 200 independently published journals focused in the biological, ecological, and environmental sciences.*

For help with your BioOne Complete subscription, contact [team@bioone.org](mailto:team@bioone.org).

For more information on how to subscribe, visit [bioone.org/subscribe](https://bioone.org/subscribe).